

**Micro Multiplem**  
**#jpeglab**

**La collezione Micro Multiplem esprime l'essenza multipla della materia, vetro e argilla, con i suoi colori, i blend e i nuovi decori. Un progetto che nasce dallo studio della forma geometrica del quadrato, scomposto nelle forme primarie più piccole in esso contenute, come triangoli e trapezi che vanno a costituire strutture quasi architettoniche. La superficie cangiante e i patterns, incisi manualmente, ne enfatizzano la percezione visiva e tattile. I colori sono frutto di uno studio che sa mettere insieme natura del territorio, tradizione, cultura e materia.**

*The Micro Multiplem collection expresses the multiple essence of matter, glass and clay, with its colours, blends and new decorations. It's a design that started out by studying the geometrical shape of a square, decomposed into its smallest primary forms, such as triangles and trapeziums which become architectural-like structures. The iridescent surface and patterns, engraved by hand emphasise the visual and tactile aspects of these. The colours are the result of research on unifying the nature of the territory with tradition, culture and material.*

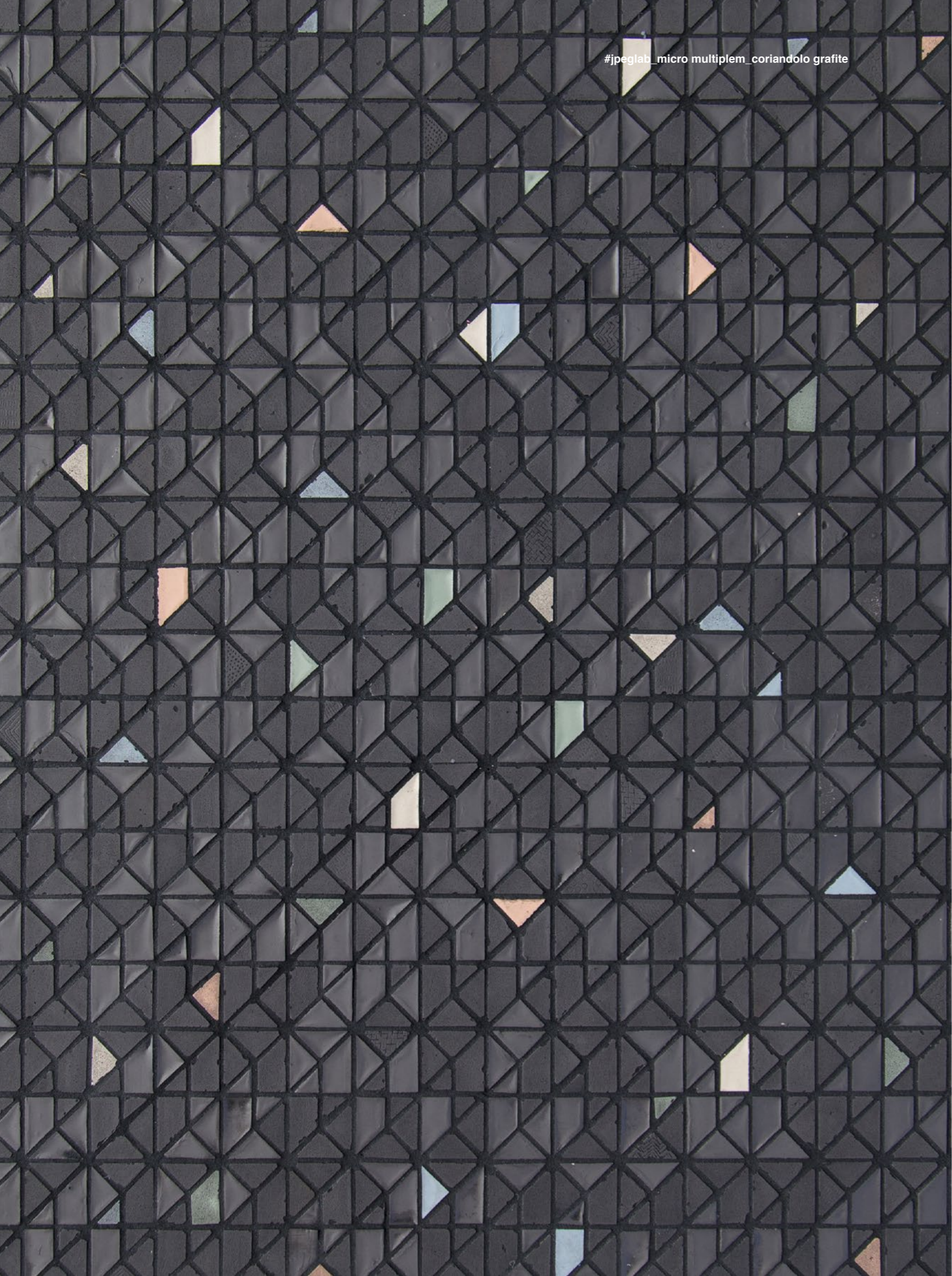
**design by Jpeglab**



M. BARRAL

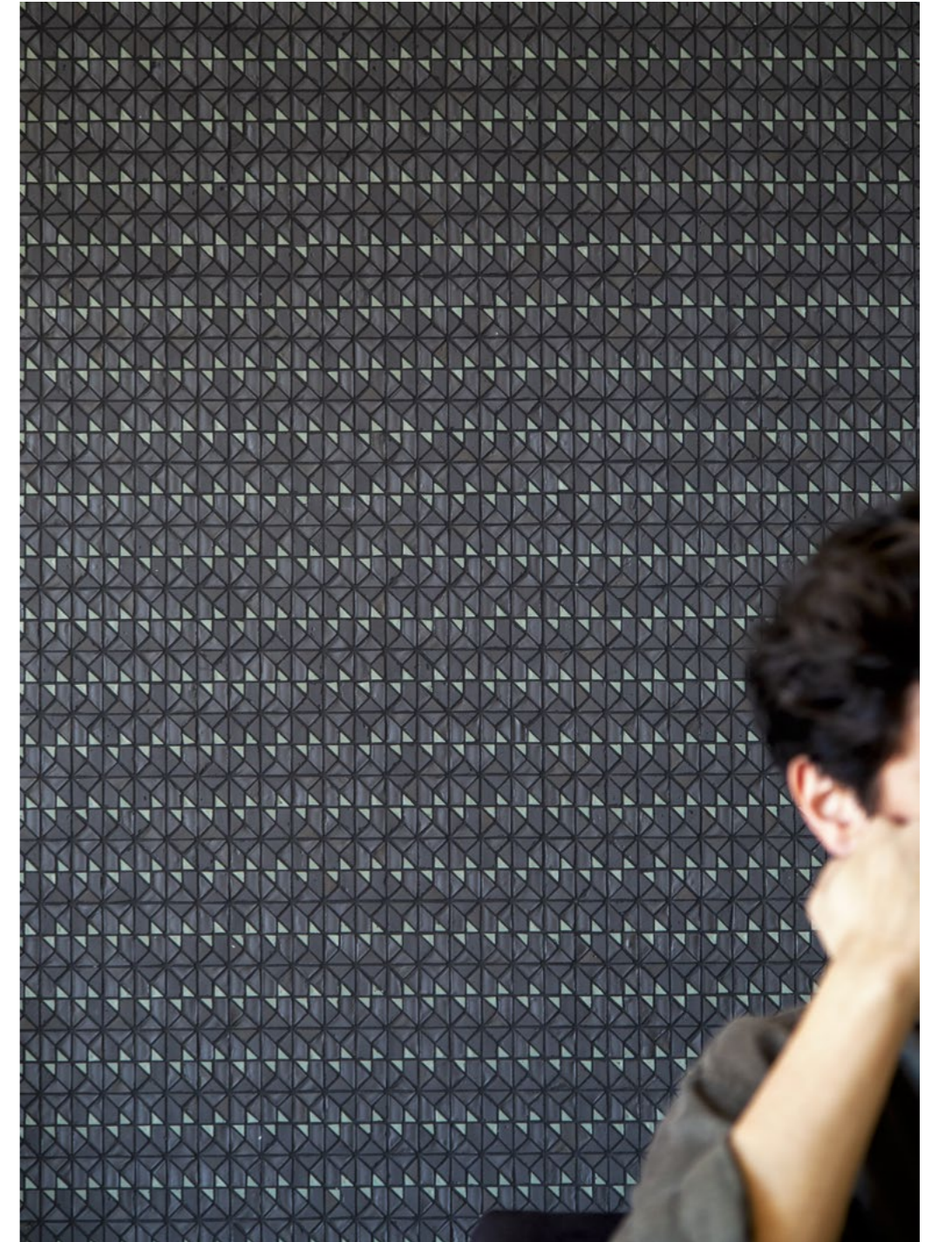


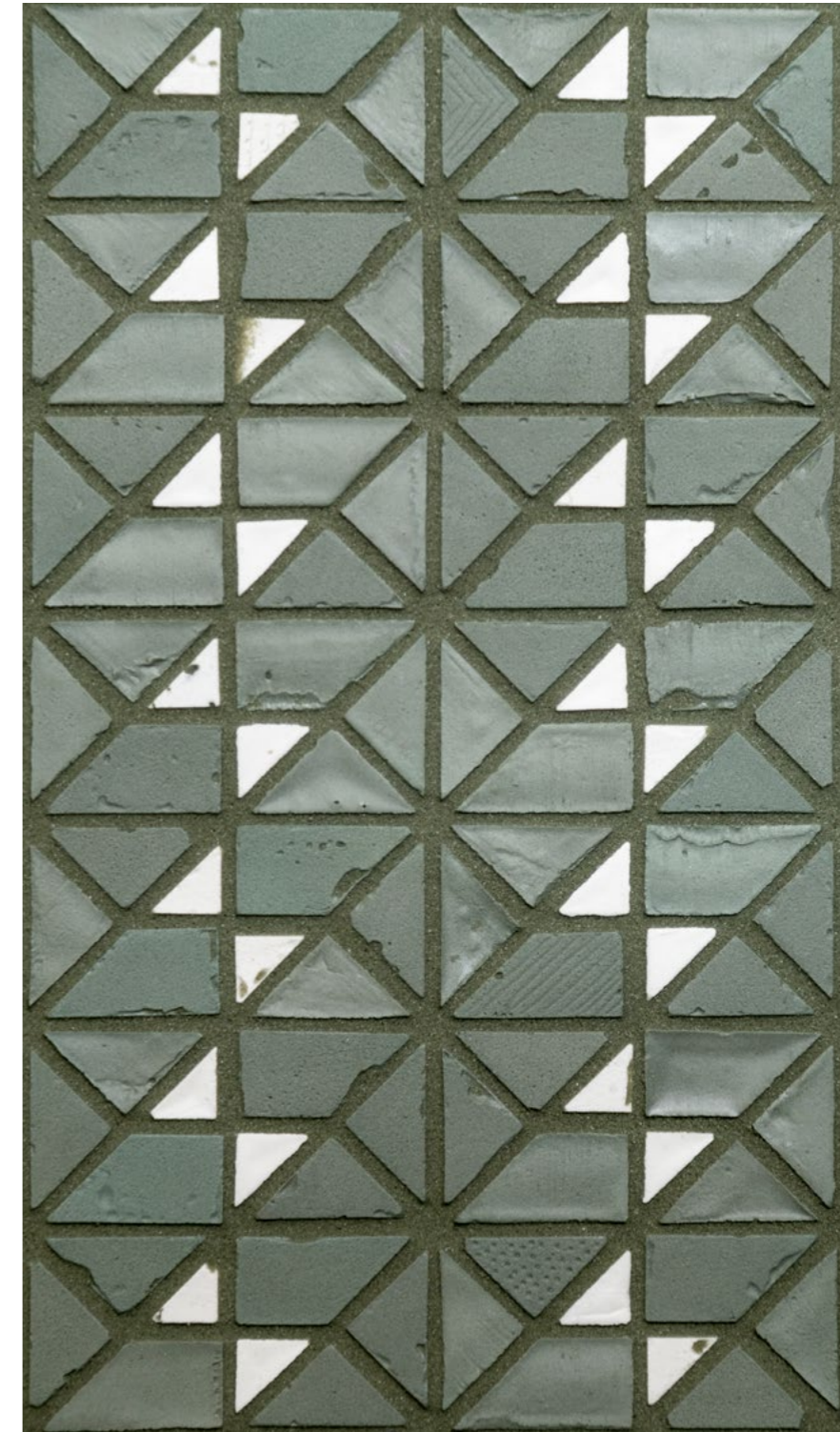
#jpeglab\_micro multiplem\_coriandolo grafite



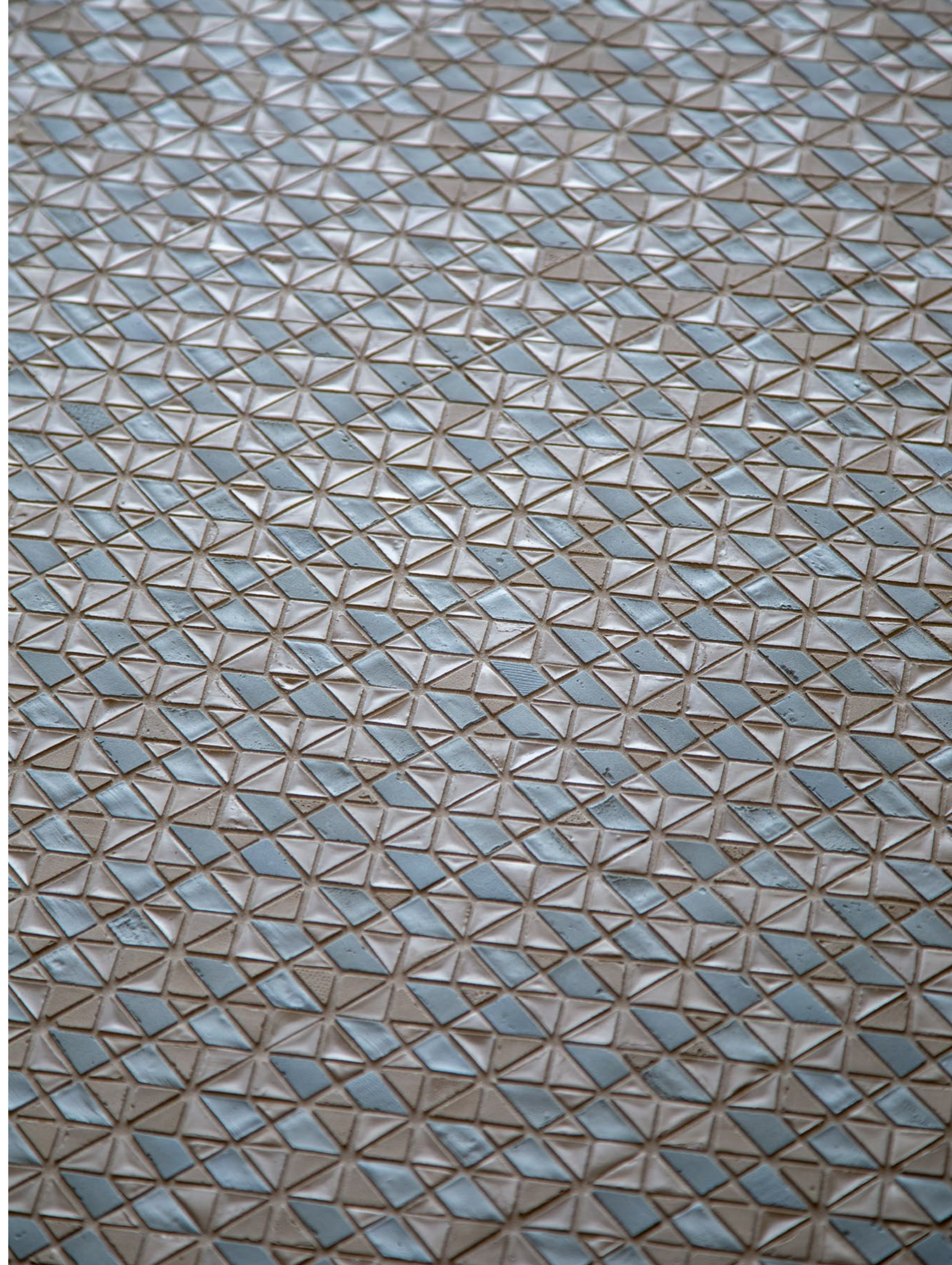
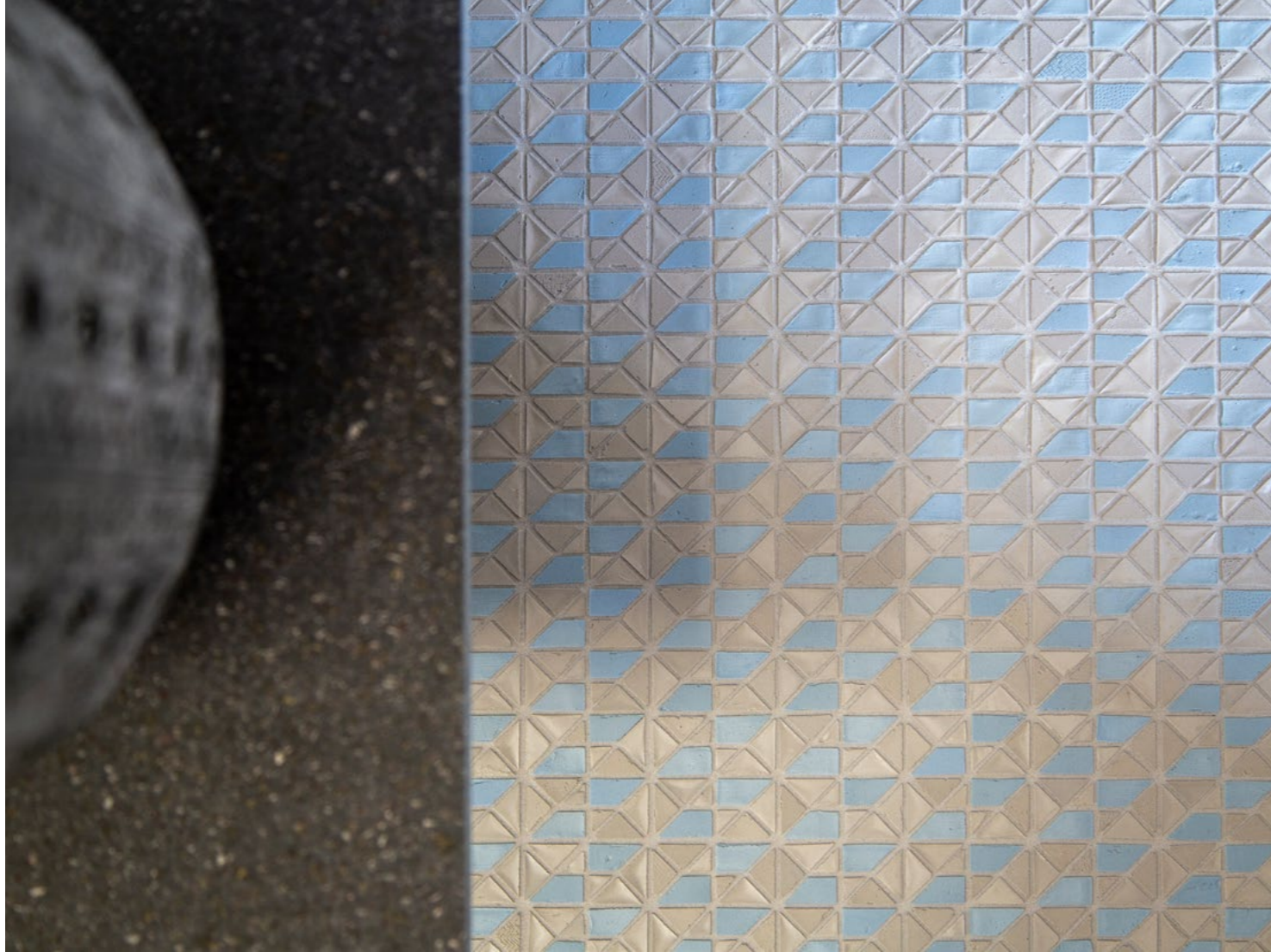
#jpeglab\_micro multiplem\_coriandolo talco



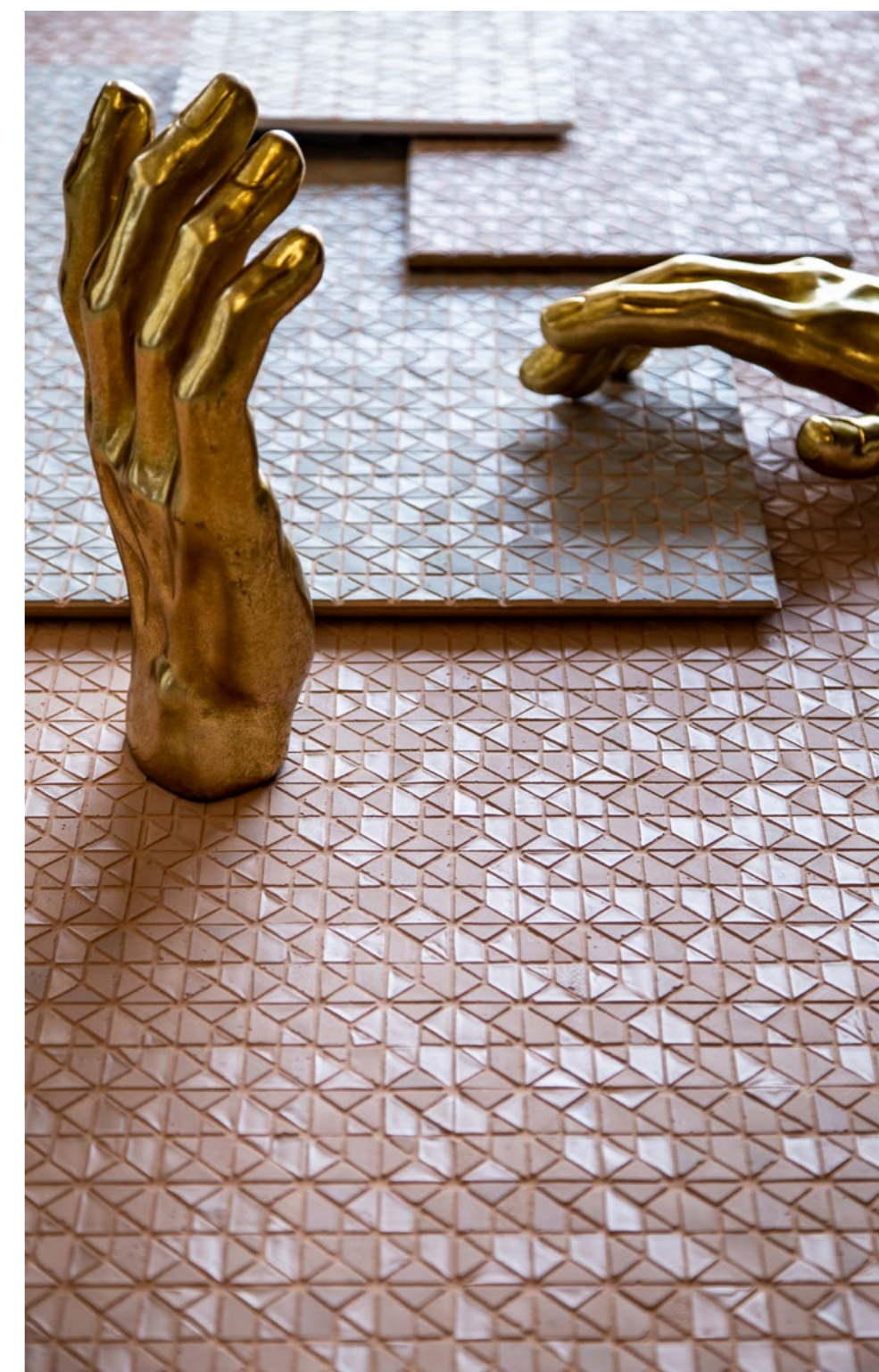
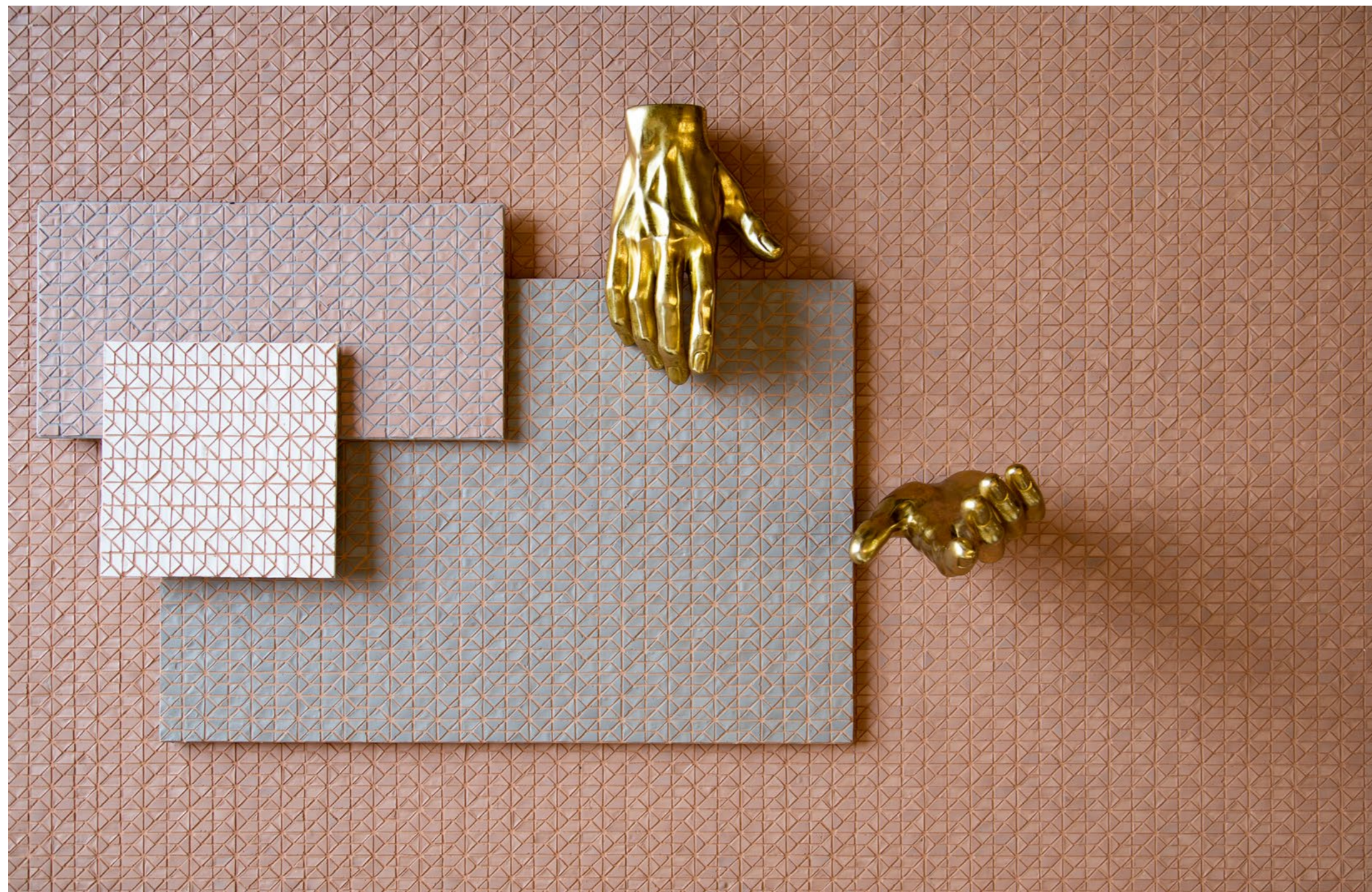




#jpeglab\_micro multiplem\_patterns \_mltd 140

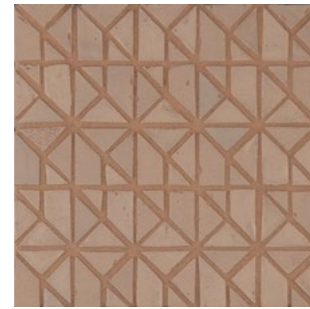








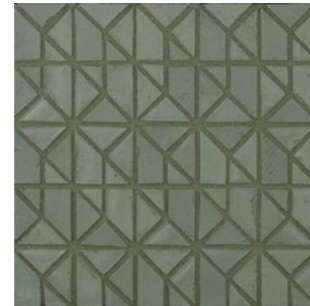
MLT 180 - Talco



MLT 240 - Salmone



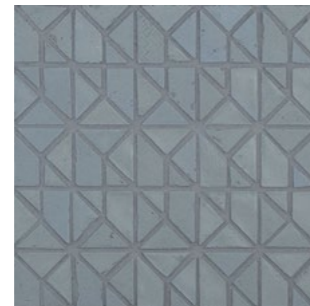
MLT 185 - Riso



MLT 250 - Salvia



MLT 190 - Cenere

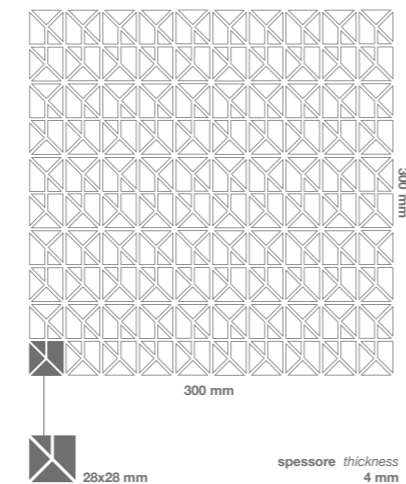


MLT 260 - Avio



MLT 200 - Grafite

Formati Size



Codice mosaico <i>Mosaic code</i>	Descrizione mosaico <i>Mosaic description</i>	Fuga consigliata* tono su tono <i>Suggested grout* tone on tone</i>	Consumo fuga - Kg / mq <i>Grout coverage - Kg / sqm</i>
MLT 180	Talco	MG - bright white 44	2
MLT 185	Riso	MG - light pewter 90	2
MLT 190	Cenere	MG - sterling silver 78	2
MLT 200	Grafite	MG - raven 45	2
MLT 240	Salmone	MG - saltillo 92	2
MLT 250	Salvia	MG - boston fern 33	2
MLT 260	Avio	MG - slate grey 91	2

1 mq = 11 fogli 1 smq = 11 sheets

\*Suggeriamo fuga epossidica We suggest epoxy grout

Dimensione scatola <i>Box size</i>	Dimensione fogli <i>Sheets size</i>	Fogli per scatola <i>Sheets-box</i>	mq-scatola <i>smq-box</i>	kg-scatola <i>kg-box</i>
330x330x55 mm	300x300x4 mm	9	0,81	3,9

Dimensione pallet <i>Pallet size</i>	Contenuto pallet <i>Pallet content</i>	Fogli-pallet <i>Sheets-pallet</i>	mq-pallet <i>smq-pallet</i>	kg-pallet <i>kg-pallet</i>
800x1200x880 mm	72 scatole 72 box	648	58,32	313

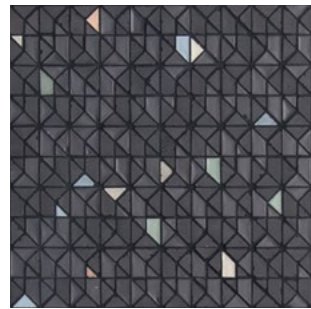
Scivolosità <i>Slipperiness</i>	Resistenza agli sbalzi termici <i>Thermal shock resistance</i>	Resistenza al gelo <i>Frost resistance</i>	Resistenza agli attacchi chimici <i>Chemical resistance</i>	Resistenza alle macchie <i>Resistance to stains</i>
classe C <i>classification C</i>	resistente <i>resistant</i>	resistente <i>resistant</i>	A LA HA	resistente <i>resistant</i>
DIN 51097:1992	UNI EN ISO 10545-9:2014	UNI EN ISO 10545-12:2000	UNI EN ISO 10545-13:2017	UNI EN ISO 10545-14:2015



MLTB 280 - Coriandolo Talco



MLTB 285 - Coriandolo Cenere



MLTB 290 - Coriandolo Grafite

Codice mosaico <i>Mosaic code</i>	Descrizione mosaico <i>Mosaic description</i>	Fuga consigliata* tono su tono <i>Suggested grout* tone on tone</i>	Consumo fuga - Kg / mq <i>Grout coverage - Kg / sqm</i>
MLTB 280	Coriandolo Talco	MG - bright white 44	2
MLTB 285	Coriandolo Cenere	MG - sterling silver 78	2
MLTB 290	Coriandolo Grafite	MG - raven 45	2

1 mq = 11 fogli 1 smq = 11 sheets

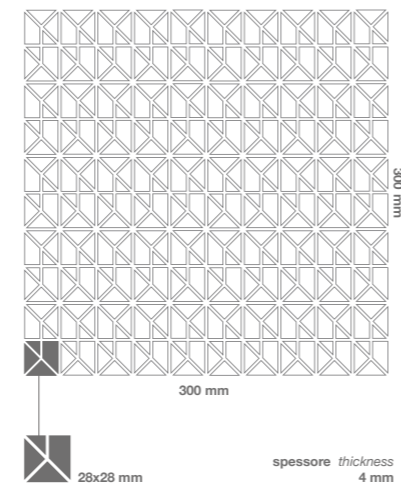
\*Suggeriamo fuga epossidica We suggest epoxy grout

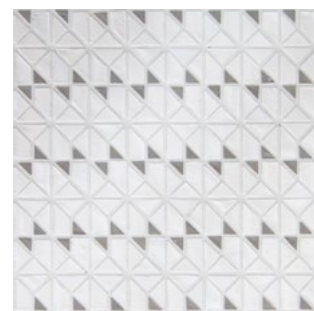
Dimensione scatola <i>Box size</i>	Dimensione fogli <i>Sheets size</i>	Fogli per scatola <i>Sheets-box</i>	mq-scatola <i>smq-box</i>	kg-scatola <i>kg-box</i>
330x330x55 mm	300x300x4 mm	9	0,81	3,9

Dimensione pallet <i>Pallet size</i>	Contenuto pallet <i>Pallet content</i>	Fogli-pallet <i>Sheets-pallet</i>	mq-pallet <i>smq-pallet</i>	kg-pallet <i>kg-pallet</i>
800x1200x880 mm	72 scatole <i>72 box</i>	648	58,32	313

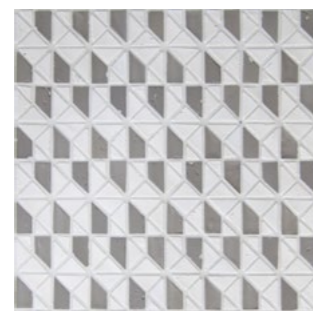
Scivolosità <i>Slipperiness</i>	Resistenza agli sbalzi termici <i>Thermal shock resistance</i>	Resistenza al gelo <i>Frost resistance</i>	Resistenza agli attacchi chimici <i>Chemical resistance</i>	Resistenza alle macchie <i>Resistance to stains</i>
classe C <i>classification C</i>	resistente <i>resistant</i>	resistente <i>resistant</i>	A LA HA	resistente <i>resistant</i>
DIN 51097:1992	UNI EN ISO 10545-9:2014	UNI EN ISO 10545-12:2000	UNI EN ISO 10545-13:2017	UNI EN ISO 10545-14:2015

Formati Size

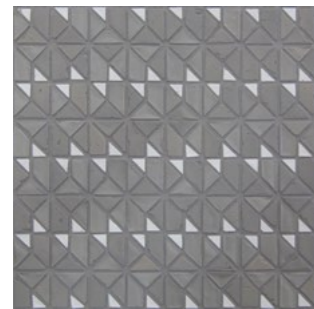




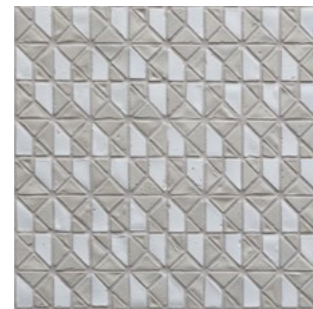
MLTD 10 - Talco\_Cenere



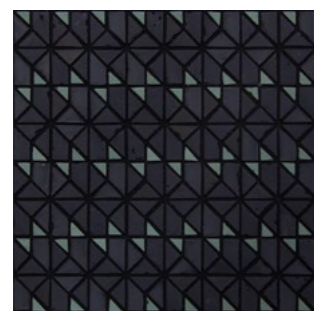
MLTD 110 - Talco\_Cenere



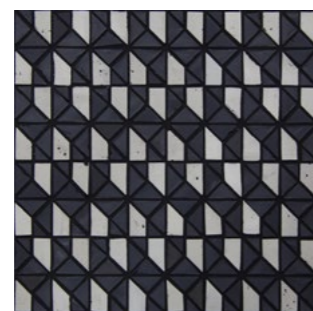
MLTD 20 - Cenere\_Talco



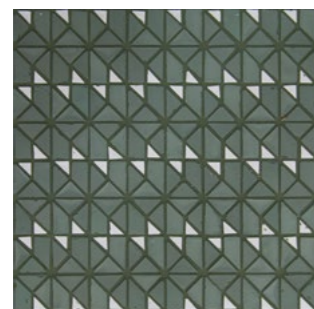
MLTD 120 - Riso\_Talco



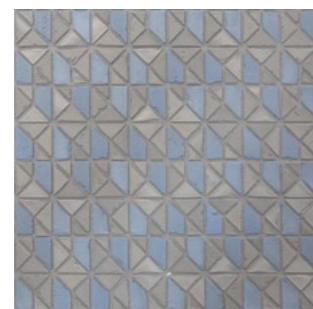
MLTD 30 - Grafite\_Salvia



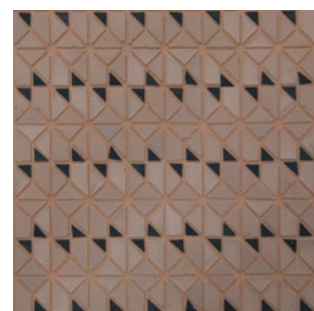
MLTD 130 - Grafite\_Riso



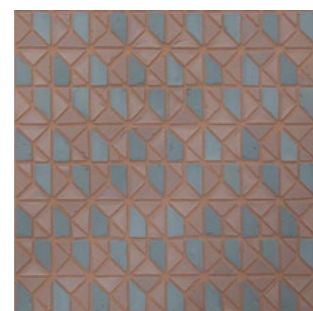
MLTD 40 - Salvia\_Talco



MLTD 140 - Cenere\_Avio

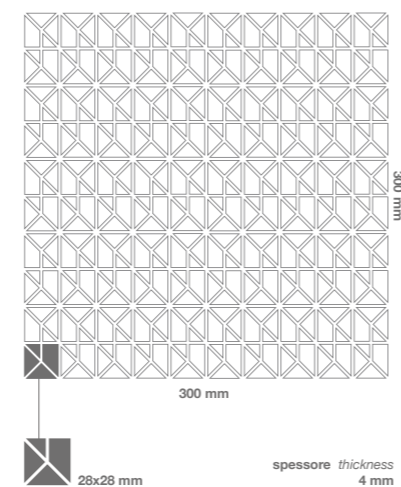


MLTD 50 - Salmone\_Grafite



MLTD 150 - Salmone\_Cenere

Formati Size



Codice mosaico <i>Mosaic code</i>	Descrizione mosaico <i>Mosaic description</i>	Fuga consigliata* tono su tono <i>Suggested grout* tone on tone</i>	Consumo fuga - Kg / mq <i>Grout coverage - Kg / sqm</i>
MLTD 10	Talco_Cenere	MG - bright white 44	2
MLTD 20	Cenere_Talco	MG - sterling silver 78	2
MLTD 30	Grafite_Salvia	MG - raven 45	2
MLTD 40	Salvia_Talco	MG - boston fern 33	2
MLTD 50	Salmone_Grafite	MG - saltillo 92	2
MLTD 110	Talco_Cenere	MG - bright white 44	2
MLTD 120	Riso_Talco	MG - light pewter 90	2
MLTD 130	Grafite_Riso	MG - raven 45	2
MLTD 140	Cenere_Avio	MG - sterling silver 78	2
MLTD 150	Salmone_Cenere	MG - saltillo 92	2

1 mq = 11 fogli 1 smq = 11 sheets

\*Sugeriamo fuga epossidica We suggest epoxy grout

Dimensione scatola <i>Box size</i>	Dimensione fogli <i>Sheets size</i>	Fogli per scatola <i>Sheets-box</i>	mq-scatola <i>smq-box</i>	kg-scatola <i>kg-box</i>
330x330x55 mm	300x300x4 mm	9	0,81	3,9

Dimensione pallet <i>Pallet size</i>	Contenuto pallet <i>Pallet content</i>	Fogli-pallet <i>Sheets-pallet</i>	mq-pallet <i>smq-pallet</i>	kg-pallet <i>kg-pallet</i>
800x1200x880 mm	72 scatole 72 box	648	58,32	313

Scivolosità <i>Slipperiness</i>	Resistenza agli sbalzi termici <i>Thermal shock resistance</i>	Resistenza al gelo <i>Frost resistance</i>	Resistenza agli attacchi chimici <i>Chemical resistance</i>	Resistenza alle macchie <i>Resistance to stains</i>
classe C <i>classification C</i>	resistente <i>resistant</i>	resistente <i>resistant</i>	A LA HA	resistente <i>resistant</i>
DIN 51097:1992	UNI EN ISO 10545-9:2014	UNI EN ISO 10545-12:2000	UNI EN ISO 10545-13:2017	UNI EN ISO 10545-14:2015