

Sumi-e
#pierolissoni



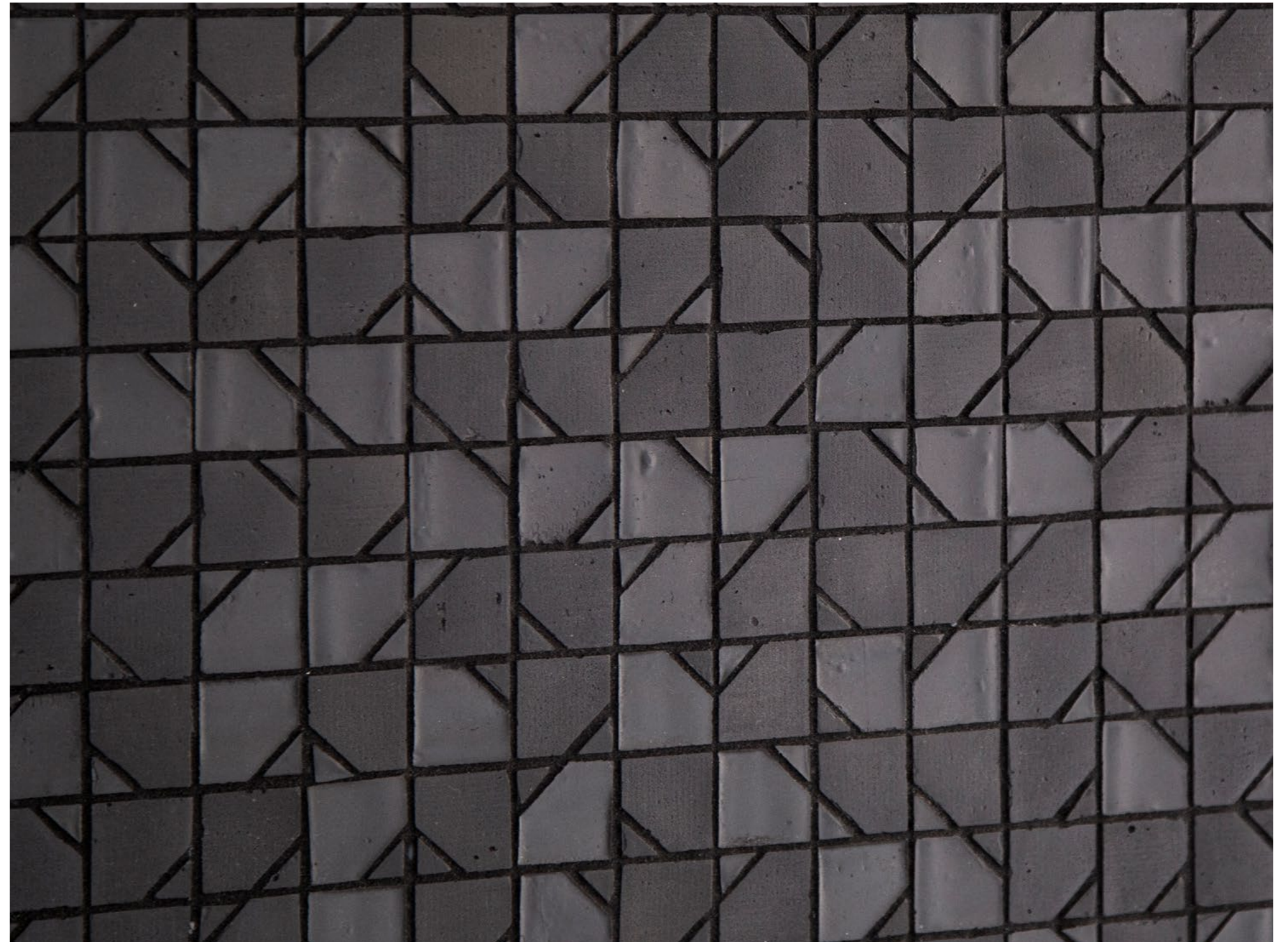
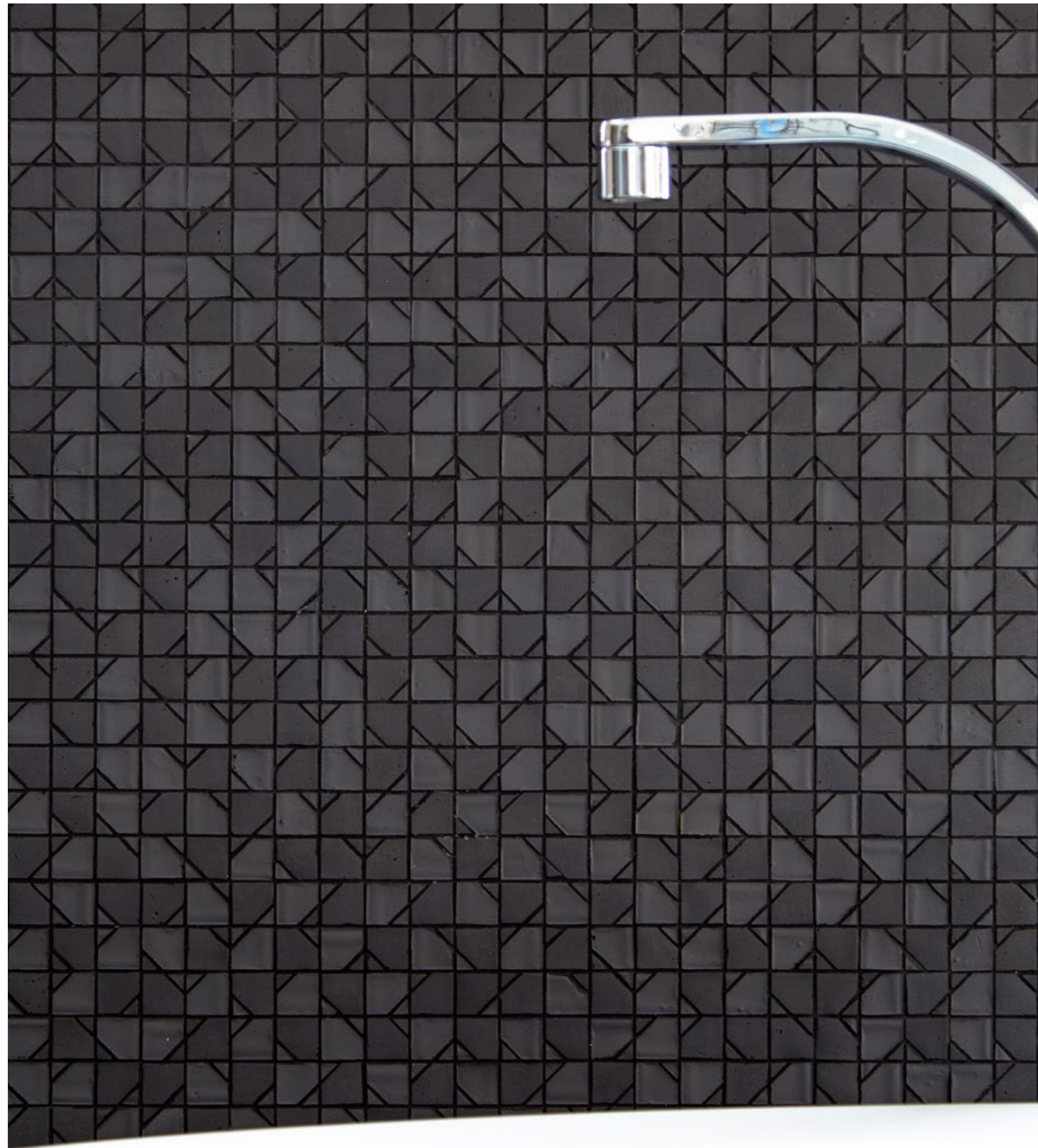
Sumi-e Delta
#pierolissoni

#pierolissoni_sumi-e_delta_talco



#pierolissoni_sumi-e_delta_riso







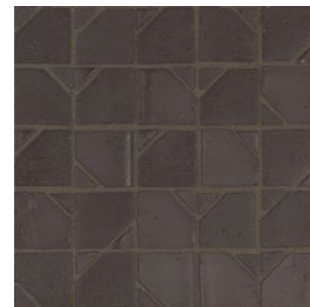
DLT 180 - Talco



DLT 194 - Fango



DLT 185 - Riso



DLT 198 - Ebano



DLT 190 - Cenere



DLT 200 - Grafite

Codice mosaico <i>Mosaic code</i>	Descrizione mosaico <i>Mosaic description</i>	Fuga consigliata* tono su tono <i>Suggested grout* tone on tone</i>	Consumo fuga - Kg / mq <i>Grout coverage - Kg / sqm</i>
DLT 180	Talco	MG - bright white 44	2
DLT 185	Riso	MG - light pewter 90	2
DLT 190	Cenere	MG - sterling silver 78	2
DLT 194	Fango	MG - natural grey 24	2
DLT 198	Ebano	MG - mocha 35	2
DLT 200	Grafite	MG - raven 45	2

1 mq = 11 fogli 1 smq = 11 sheets

*Suggeriamo fuga epossidica We suggest epoxy grout

Dimensione scatola <i>Box size</i>	Dimensione fogli <i>Sheets size</i>	Fogli per scatola <i>Sheets-box</i>	mq-scatola <i>smq-box</i>	kg-scatola <i>kg-box</i>
330x330x55 mm	300x300x4 mm	9	0,81	4,3

Dimensione pallet <i>Pallet size</i>	Contenuto pallet <i>Pallet content</i>	Fogli-pallet <i>Sheets-pallet</i>	mq-pallet <i>smq-pallet</i>	kg-pallet <i>kg-pallet</i>
800x1200x880 mm	72 scatole 72 box	648	58,32	334

Scivolosità <i>Slipperiness</i>	Resistenza agli sbalzi termici <i>Thermal shock resistance</i>	Resistenza al gelo <i>Frost resistance</i>	Resistenza agli attacchi chimici <i>Chemical resistance</i>	Resistenza alle macchie <i>Resistance to stains</i>
classe C <i>classification C</i>	resistente <i>resistant</i>	resistente <i>resistant</i>	A LA HA	resistente <i>resistant</i>
DIN 51097:1992	UNI EN ISO 10545-9:2014	UNI EN ISO 10545-12:2000	UNI EN ISO 10545-13:2017	UNI EN ISO 10545-14:2015

Formati Size

