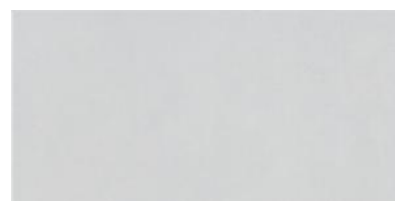



TECHNICAL FEATURES

MODEL: AT.BLAZE ARGENT
SIZE: 30,3x61,3
THICKNESS(mm): 9
DATE: 04/11/2024
CODE: 015.722.0135.03677
GROUP: GRUPO BIa UNE-EN 14411 Anexo G / SASO GSO ISO 13006:2022 Anexo G
TILE TYPE: GL
FINISH: MATT
FAMILY: GLAZED PORCELAIN TILES
NUMBER OF DESIGNS: 8



TEST	RESULT	
UNE-EN ISO 10545-2 DIMENSIONAL FEATURES	COMPLIES WITH THE STANDARD	
UNE-EN ISO 10545-3 WATER ABSORPTION	<= 0,5 %	
UNE-EN ISO 10545-4 MODULUS OF RUPTURE - BREAKING STRENGTH	1600-2400 N	
	MODULUS OF RUPTURE - BENDING STRENGTH	35-45 N/mm2
UNE-EN ISO 10545-6 RESISTANCE TO DEEP ABRASION (MM3)	NOT APPLY	
UNE-EN ISO 10545-7 RESISTANCE TO SURFACE ABRASION	PEI IV	
UNE-EN ISO 10545-8 LINEAR THERMAL EXPANSION	<7,0 x 10-6 °C-1	
UNE-EN ISO 10545-9 THERMAL SHOCK RESISTANCE	RESISTS	
UNE-EN ISO 10545-11 CRAZING RESISTANCE	RESISTS	
UNE-EN ISO 10545-12 FROST RESISTANCE	RESISTS	
UNE-EN ISO 10545-13	CHEMICAL RESISTANCE - AMMONIUM CHLORIDE 100 G/L	A
	CHEMICAL RESISTANCE - SODIUM HYPOCHLORITE 20 MG/L	A
	CHEMICAL RESISTANCE - HYDROCHLORIC ACID 3%	COMPLIES WITH THE STANDARD
	CHEMICAL RESISTANCE - CITRIC ACID 100 G/L	COMPLIES WITH THE STANDARD
	CHEMICAL RESISTANCE - POTASSIUM HYDROXYDE 30 G/L	COMPLIES WITH THE STANDARD
UNE-EN ISO 10545-14	STAIN RESISTANCE - GREEN AGENT IN LIGHT OIL	5
	STAIN RESISTANCE - IODINE SOLUTION IN ALCOHOL	5
	STAIN RESISTANCE - OLIVE OIL	5

SLIP RESISTANCE

	TEST		RESULT
	UNE 41901:2017 EX	SLIP RESISTANCE (PENDULUM)	CLASE 1
	DIN 51130	CRITICAL ANGLE OF SLIP (INCLINED PLATFORM)	R9
	DIN 51097	CRITICAL ANGLE OF SLIP. WET-LOADED BAREFOOT AREAS	B
	BS7976 (PTV) WET	CLASSIFICATION ACCORDING TO PENDULUM TEST VALUES (PTV) WET	-
	ANSI A326.3	DYNAMIC COEFFICIENT OF FRICTION (DCOF) OF RIGID FLOORS.	-

TEST		VALOR UPEC
UPEC	UPEC CERTIFICATION	-

Declaration of Performance:

https://www.pamesa.com/ERP/4.0/empresas/151/045/ficheros/t00030006/113/DdP_DoP_N003CPR2013.pdf

TECHNICAL DEPARTMENT
PAMESA CERÁMICA